

Alaska Department of Fish and Game

Habitat Section
Southeast Region



114-34-10200 Tributary 8

ADDITION

Water body name:

Survey date: 9/16/2022

Quad: Juneau A-5

Species & Lifestage:

Upper Reach Latitude: 58.143489 **Longitude:** -135.621096

Survey crew: DK, RR, FC

Lower Reach Latitude: 58.142089 **Longitude:** -135.617685

Findings: We surveyed this uncataloged stream using a backpack electrofisher, baited minnow traps, and GPS. We captured juvenile coho salmon. The tributary stream flows through a narrow channel, falling over a couple debris jams, and widens downstream where it is fed by several tributaries and beaver activity is prevalent (Table 1; Figures 1–3).

Recommendations: Add this uncataloged stream to the anadromous waters catalog for rearing coho salmon (Figure 4).

Nomination: Pending

Table 1.—114-34-10200 tributary 8 survey data.

Waypoint	Latitude	Longitude	Notes	Stream Width ft	Stream Substrate	Habitat Features	Gradient %	Sample Effort	Sample Results
935	58.146330	-135.624013	Minnow trap soaked overnight ~100' downstream of culvert. 18" CMP culvert outlet perched 4-5' onto bedrock/riprap.	4-6	Small Gravel Large Gravel		4-6	MT	No Fish
948	58.146233	-135.623992	Probably some kind of grade barrier downstream, no fish capture.	2-4	Large Gravel		8-10	MT	No Fish
1851	58.143562	-135.622225	Narrow but deep channel, 3' deep. Small debris jam causes 2' tall jump.	1-2	Fine Organic		2-4	EF	No Fish
1852	58.143493	-135.621124	3-4' tall debris and root jam, 1' deep jump pool. Fish caught right below.	2-4	Fine Organic		2-4	EF	2 CO
1853	58.143403	-135.621256	Braid flows in from other beaver dam.						
1862	58.142792	-135.619145	1-2' tall beaver dam, fish preset above.	10-12	Fine Organic		0-1	VI	3 CO



Figure 1.—Juvenile coho salmon captured at waypoint 1852.



Figure 2.—Channel at waypoint 1862.



Figure 3.—Debris jam falls at waypoint 1852.

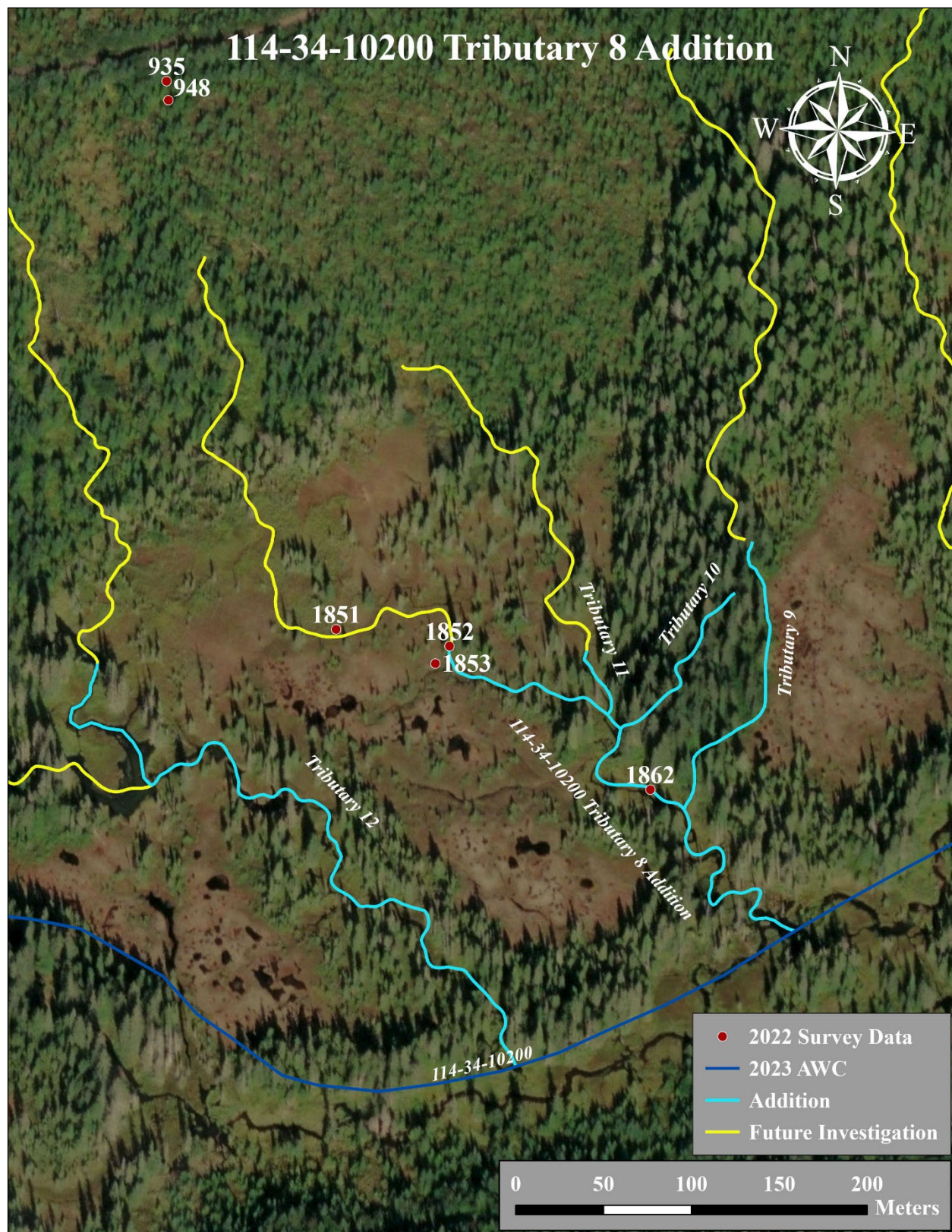


Figure 4.—114-34-10200 tributary 8 addition map.